



GEZE BIM PROJECTS FOR REVIT

GREATER PLANNING SECURITY – QUITE SIMPLY!



BEWEGUNG MIT SYSTEM

## **Design and realise construction projects: simply, quickly and securely**

Building Information Modeling (BIM) is a method of innovative building planning that uses digital building models – from planning and implementation through to operation and possible demolition. BIM allows buildings to be designed, modelled, optimised and simulated. During this process, all relevant building data is recorded, combined and networked. And all that in just one 3D model which all involved parties can work on jointly.

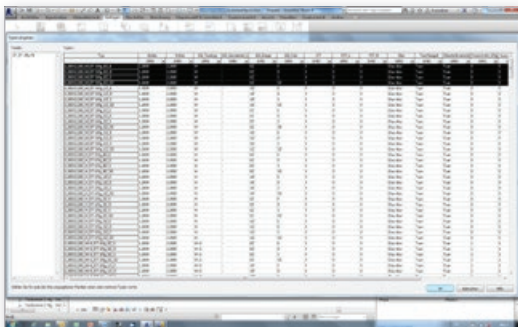
## **Advantages of virtual construction with BIM:**

- better exchange of information among all involved parties
- increased productivity
- earlier error detection and rectification
- more planning and cost security

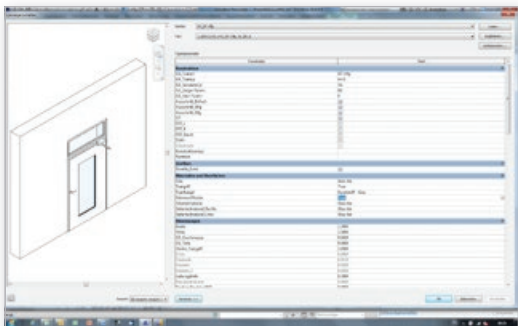
## **GEZE BIM door projects: Advantages at a glance**

- generate all door solutions with just 5 door types
- simple and easy to use
- can be used at every stage of the project
- complete depiction possible in 3D
- complete lists of elements at the push of a button
- compatible with the most common CAD programs
- can also be used offline

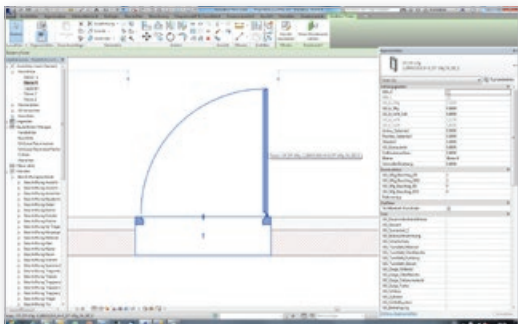
# THE FUNCTIONS



1. Open BIM project

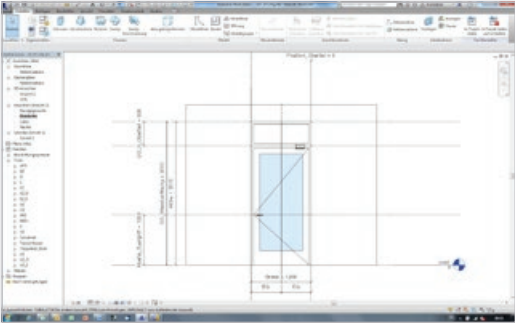


2. Determine the parameters

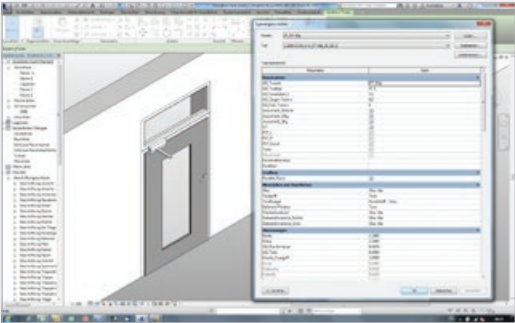


3. Insert the door

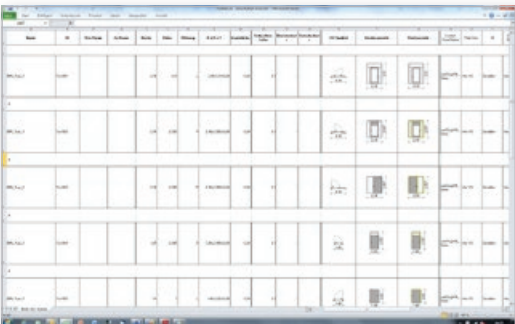
# THE SPECIAL FEATURES



*Elevation*



*3D illustration*



*Creating of door schedules / element lists*

## **The GEZE door family for Autodesk Revit: 5 elements for complete door planning**

Greater planning security with little effort: All the doors in a building can be planned extremely easily using GEZE BIM projects. Because the GEZE solution enables everything to be displayed using just five multifunctional doors – from swing and sliding doors through to revolving doors. GEZE BIM projects are compatible with the CAD program Autodesk Revit by version 2015, so that planners can generate their door schedule / element list directly. The GEZE solution is also available for Graphisoft Archicad and Nemetschek Allplan.



## About GEZE

GEZE develops, manufactures and sells system solutions for door, window and safety technology and is one of the global market leaders. GEZE safety technology is crucial wherever preventative fire protection, protection against theft along escape and rescue routes or access control are concerned. Tailored solutions combine individual safety requirements in one intelligent system so that doors and windows are opened and closed in a coordinated way in an emergency.

With customised service packages, GEZE Service accompanies your products throughout their whole life cycle and guarantees durability and safety.

We will be happy to provide further information if required and look forward to hearing from you!

GEZE Benelux B.V.  
Industrieterrein Kapelbeemd  
Steenoven 36  
5626 DK Eindhoven  
Netherlands  
Telephone: +31 (0)40 - 2629080  
Fax: +31 (0)40 - 2629085  
[www.gezebenelux.com](http://www.gezebenelux.com)